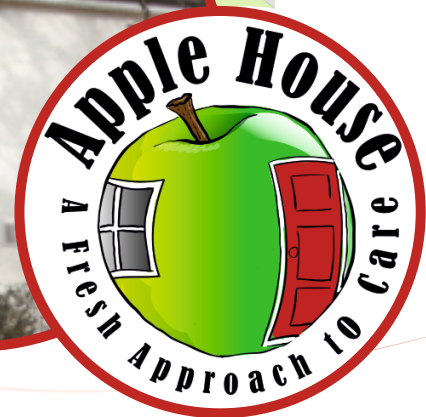


Redcroft

Residential Care Home

Welcome

Welcome to Redcroft residential care home. Redcroft is a large Edwardian house with much character and provides a charming home for up to ten adults with learning disabilities.



Redcroft Care Home

Telephone: 01202 428158

Email: redcroft@applehouse.co.uk

W: www.applehouse.co.uk

255 Belle Vue Road, Bournemouth BH6 3BD

Redcroft

Residential Care Home

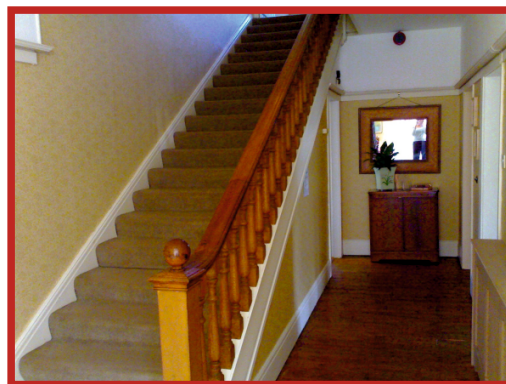
Facilities, Activities & Amenities

Redcroft is a large Edwardian house which has retained much of its grandeur from days gone by, with high ceilings, splendid original oak staircase and oversized bedrooms. Located within the mature residential area of Southbourne, Redcroft sits on the periphery of the seaside town of Bournemouth.

Redcroft care home offers ten spacious bedrooms over three floors, with most having en-suite bathrooms. The first floor is served by a full passenger lift which is wheelchair accessible. To the rear there is a large private garden where residents can sit and enjoy their leafy surroundings, grow their own vegetables, care for the home's chickens and collect the eggs to bake with.

We encourage residents to take an active role in their lives by supporting them to carry out day to day tasks. To develop confidence levels and promote social inclusion we help residents to enhance their lives by seeking new activities and experiences both locally and in the wider community. We offer a range of activities such as pet therapy, visiting owls and dogs, BBQs, picnics and parties, and we also attend a variety of local events.

Residents have the choice of where they would like to go and what they would like to do during their annual holiday and weekend breaks. The break away provides residents with the opportunity to interact with different people in new surroundings and to help develop social skills.



Redcroft Care Home

Telephone: 01202 428158

Email: redcroft@applehouse.co.uk

W: www.applehouse.co.uk

255 Belle Vue Road, Bournemouth BH6 3BD